

“To accomplish great things we must

not only **act**

but also **dream**..

not only **plan**.

but also **believe**.”

Anatole France



## Community Health Improvement Process Models/Frameworks

Mary Kate Allee  
Julia Joh Elligers



**NACCHO**  
National Association of County & City Health Officials

## Learning Objectives

**At the completion of this session participants will be able to:**

- 1) Critically reflect on the fit of their site's intended model/framework given their own resources, context, situation.
- 2) Identify how to capitalize on the strengths and address the limitations of their site's chosen model/framework.
- 3) Discuss whether the model/framework decision needs to be vetted with any other partners or community members before moving forward.
- 4) Describe how partners and community members were engaged in choosing the model/framework and what the implications of this are for next steps in the health improvement process.
- 5) Describe how other demonstration sites decided upon or are working to choose their model/framework.
- 6) Discuss the implications of modifying the Mobilizing for Action through Planning and Partnerships model/framework.



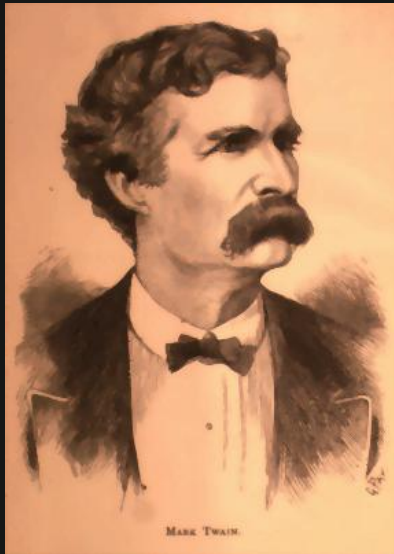
Planning and  
**NACCHO**  
National Association of County & City Health Officials

<http://www.youtube.com/watch?v=Kqb-mmkEWqU>



**What I hear, I forget;  
What I see, I remember;  
but what I do, I understand.**

**~ Confucius**



**“Take out  
your brain  
and jump on  
it. It gets all  
caked up.”**

**- Mark Twain**

## Definition: Community Health Improvement Process

- A comprehensive approach to assessing community health and developing and implementing action-plans to improve community health through substantive community member and local public health system (LPHS) partner engagement. The community health improvement process yields two distinct yet connected deliverables: a community health assessment presented in the form of a community health profile and a community health improvement plan.



**NACCHO**  
National Association of County & City Health Officials

## Required Community Health Improvement Process Characteristics for Demo Sites

- Engage community members throughout the process
- Include local public health system representatives throughout the process
- Address social determinants of health
- Use quality improvement or quality planning techniques
- Leverage local and state resources



**NACCHO**  
National Association of County & City Health Officials

## Common Elements in Community Health Improvement Process Models

- 1) Prepare and plan
- 2) Engage the community
- 3) Develop a goal or vision
- 4) Conduct community health assessment(s)
- 5) Prioritize health issues
- 6) Develop community health improvement plan
- 7) Implement community health improvement plan
- 8) Evaluate and monitor outcomes



**NACCHO**  
National Association of County & City Health Officials

## Different Community Health Improvement Process Scope & Philosophy

- Programmatic area
- Agency division
- Local health department
- Public health system
  
- Biomedical model
- Socio-ecological model
- Social justice/health equity model
  
- Health promotion
- Strategic planning
- Performance measurement



**NACCHO**  
National Association of County & City Health Officials

## Group Discussion: Questions About Your Model

- Is it clear why you and your partners have selected your chosen model?



**NACCHO**  
National Association of County & City Health Officials

11

## Group Discussion: Questions About Your Model

- Do you have outstanding questions that need to be answered in order to finalize your decision?



**NACCHO**  
National Association of County & City Health Officials

12

## Group Discussion: Questions About Your Model

- What do you anticipate as a major challenge with implementing your selected model?



**NACCHO**  
National Association of County & City Health Officials

13

## Group Discussion: Questions About Your Model

- Why do you think your selected model will be successful in your community?



**NACCHO**  
National Association of County & City Health Officials

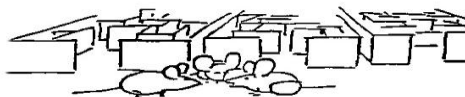
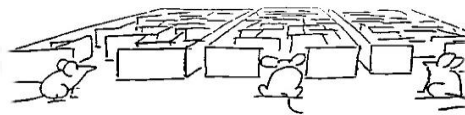
14

Framework/Model	Demonstration Site
MAPP ( with no anticipated modifications at this time)	Central Valley Health District East Central Kansas Public Health Coalition New Orleans Health Department Plumas County Public Health Agency San Francisco Department of Public Health
MAPP with modifications	Alachua County Health Department Austin/Travis County Health and Human Services Kittitas County Public Health Department Thomas Jefferson Health District
ACHI with modifications	Barry-Eaton District Health Department Norwalk Health Department
Undecided	Gallatin City-County Health Department

## Group Discussion: Details of Implementation

Purpose: To foster peer learning and to identify areas for additional technical assistance

T  
E  
A  
M  
W  
O  
R  
K





## Group Discussion: Details of Implementation

- Why did you select your model? If you're modifying MAPP, what modifications are you making?



Warning:

Simplistic Conclusions May Be Hazardous!

## Group Discussion: Details of Implementation

- How were your partners involved in selecting the model?



**NACCHO**  
National Association of County & City Health Officials

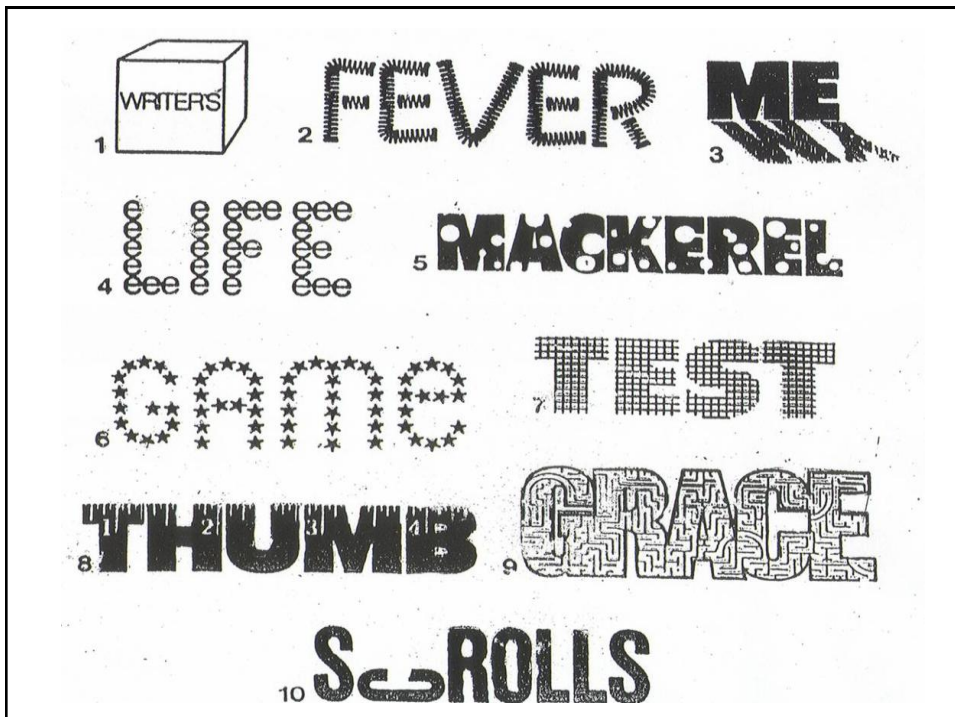
## Group Discussion: Details of Implementation

- How are you using your model to
  - Engage community members throughout the process (ask follow-up questions focusing on first 3 objectives) (how can engagement be improved)
  - Include local public health system representatives throughout the process
  - Address social determinants of health
  - Use quality improvement or quality planning techniques
  - Identify and leverage assets



**NACCHO**  
National Association of County & City Health Officials

19



## Reflection

- What actions do you need to take to move forward?
- What values do you want to hold in this process?
- What can you do to deal with obstacles?
- What attributes are needed for community health assessment and planning to work well?
- What are you really committed to?
- What is your vision for your community?



**NACCHO**  
National Association of County & City Health Officials

21

## Questions/Reflections



**NACCHO**  
National Association of County & City Health Officials

22