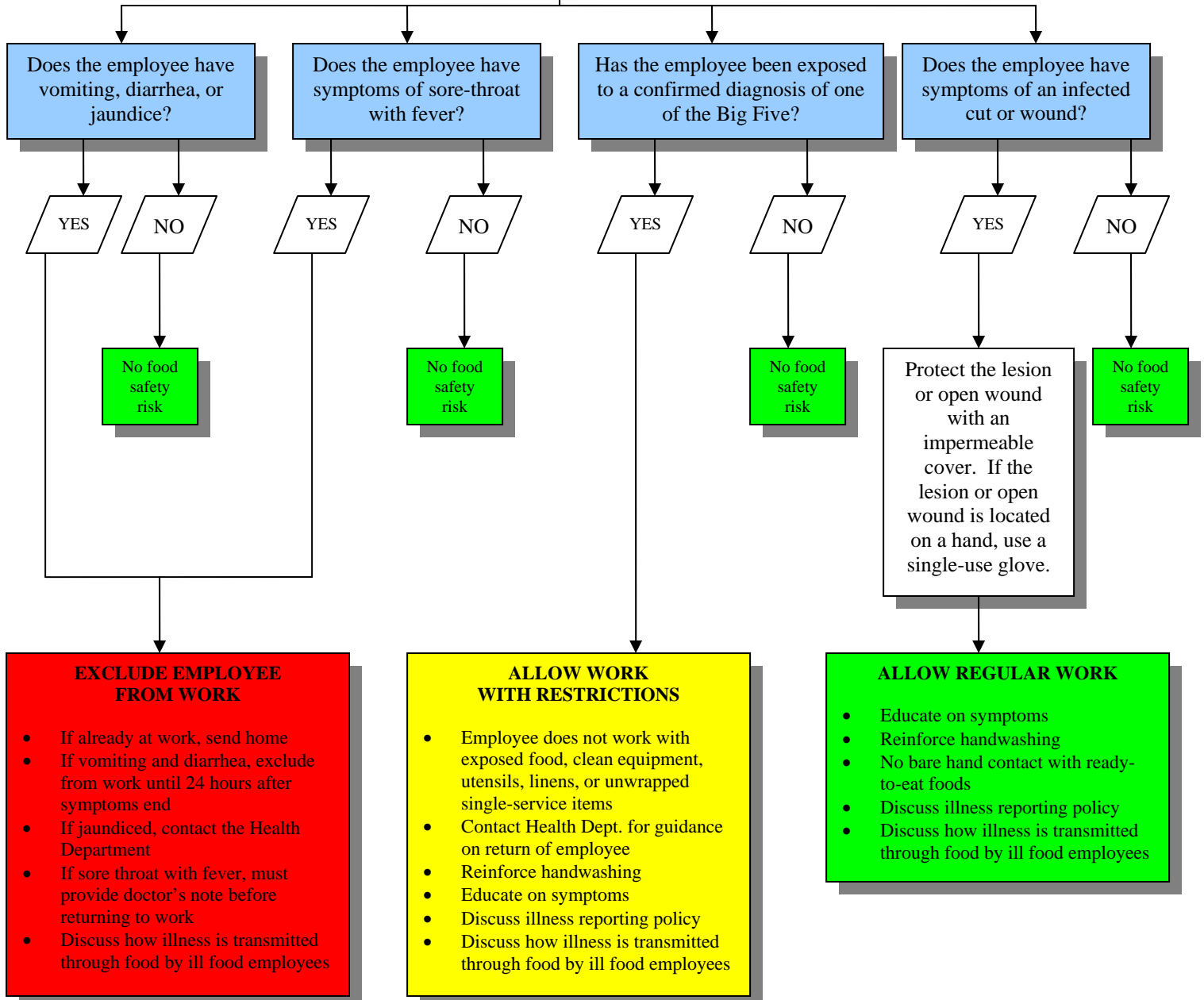


Employee Illness Decision Guide for PIC/CFM (HSP)

To be used for employees working with a **highly susceptible population**, including nursing homes, adult day health care, child day care or elementary school. Use this flow chart to determine if an employee with an **undiagnosed** illness can spread the illness through food and should be restricted or excluded from work.

Employee calls manager to report illness, PIC/CFM asks EACH of the following questions:



If a food employee reports a **diagnosis of Norovirus, *E.coli* O157:H7, *Shigella*, Hepatitis A virus, or *Salmonella* Typhi**, immediately exclude the employee and contact the Fairfax County Health Department, Food Safety Section at 703-246-2444 for guidance.