

A SNAPSHOT OF NACCHO'S FORCES OF CHANGE SURVEY | THE COVID-19 EDITION

From the Front Line of Public Health Response



Responding to COVID-19: The Burden on Local Health Departments (LHDs)

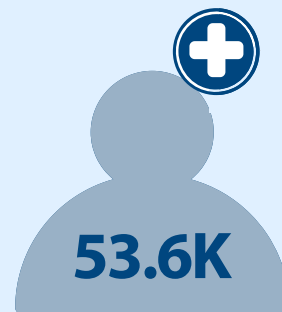
Following years of chronic under-resourcing, the pandemic stretched the local public health infrastructure to its limits, with LHDs spending already strained financial and staffing capacities to respond.



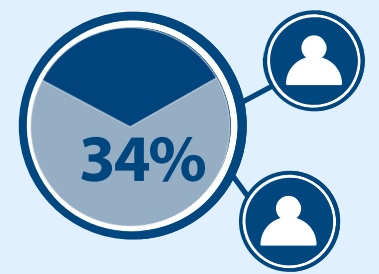
Total spent by LHDs on 2020 response efforts



Cost of 2020 response efforts proportionate to total 2019 LHD spending



Employees hired by LHDs for 2020 response efforts

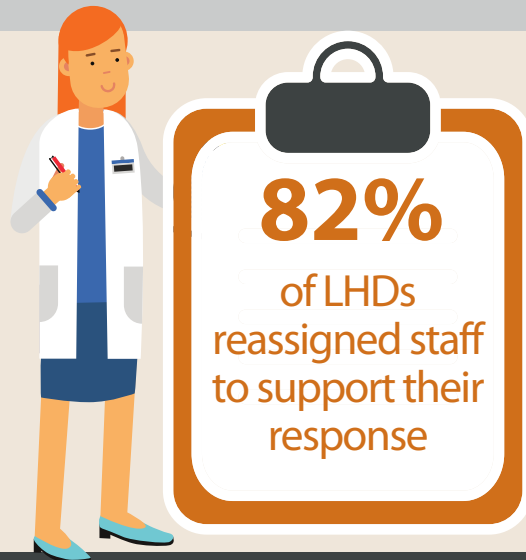
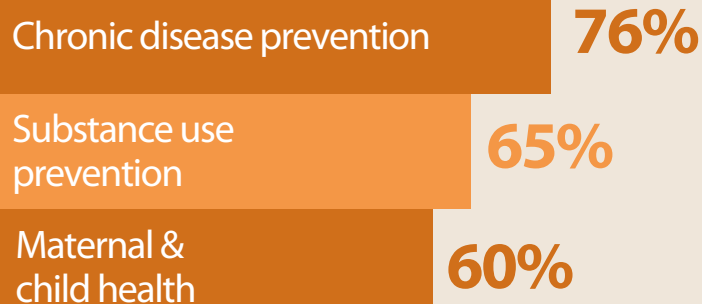


Staffing for 2020 response efforts proportionate to total 2019 LHD workforce

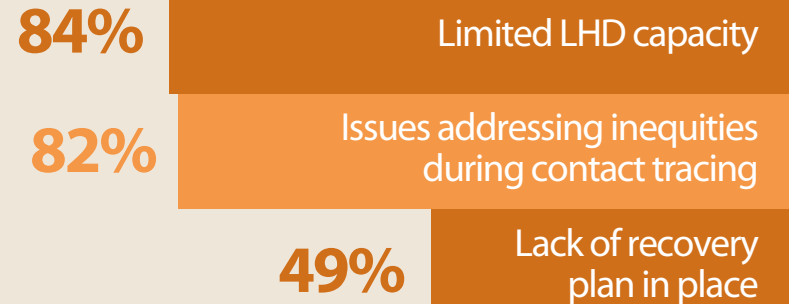
Hindering Population Health: The Impacts of Response on Local Capacity

To reallocate capacity for the critical frontline response, LHDs suspended foundational public health services, further exacerbating health inequities and existing community epidemics.

PERCENT OF LHDs REDUCING THEIR SERVICE PROVISION



PERCENT OF LHDs FACING BARRIERS TO ROBUST RESPONSE



Paving the Road Forward: The Next Steps for Community Recovery & Resilience

LHDs need long-term resource investments expanding capacity for preparedness planning, health equity, and community recovery to bolster response to future public health emergencies.

1 Galvanize support for local public health funding & staffing
[BIT.LY/LHDACTION](https://bit.ly/LHDACTION)

2 Target response efforts to address health inequities
[BIT.LY/LHDEQUITY](https://bit.ly/LHDEQUITY)

3 Prioritize pandemic & community recovery planning
[BIT.LY/LHDRECOVER](https://bit.ly/LHDRECOVER)



In October 2020, NACCHO administered the Forces of Change survey to assess changes in LHD capacity driven by the pandemic. A total of 583 LHDs completed a set of core questions, and 237 completed an additional module—24% and 26% response rates, respectively. Funding was provided by RWJF and the CDC (cooperative agreement 5 NU38OT000306-04-00).

TO LEARN MORE, VISIT [WWW.NACCHO.ORG/FORCES](https://www.naccho.org/forces)

