



Maricopa County Cutting Edge Program



Food Service facilities, must submit policies for the following applicable Risk Factors:

- **Cooking Temperatures**
- **Cooling**
- **Reheating**
- **Cold Holding**
- **Hot Holding**
- **Hand Washing / No Bare Hand Contact**
- **Cross Contamination**
- **Cleaning and Sanitizing Food Contact Surfaces**
- **Approved Food Source**
- **Employee Health and Illness**

Policies are evaluated for minimum code compliance, training of staff, and verification.

Every other inspection is a Verification Visit that focuses on evaluating these risk factor areas.





Environmental Health

- Office Locations
- Doing Business
- Food Safety Tips for You
- Rules & Regulations
- Departments & Programs
- FAQs
- Contact Us

Env. Health Quick Links

- Restaurant Ratings
- Food Inspection Grading
- MAP IT - Food Safety Partners
- UPDATE Food Worker Cards
- Pets in Food Establishments
- Home Baked Goods
- Need a Permit?

Home :: Environmental Health :: Departments & Programs :: The Cutting Edge Program

The Cutting Edge Program

Food Safety Management Partnership



The Maricopa County Environmental Services Department is proud to present an innovative program that promotes food safety practices and recognize industry for their food safety systems. All county food-related establishments have the opportunity to partner with Maricopa County in implementing a proactive approach to reducing foodborne illness risk factors.



Businesses become a food safety partner



Videos on the Food Safety Partnership Program The Cutting Edge



The Cutting Edge for Your Business



For You and Your Family

Map of Food Safety Partners

Cutting Edge Program Participants pdf | Excel



View Map

Cutting Edge participants map offers enhanced data to



Food Safety Recalls & Tips

Recalls Tips

Chetak New York L.L.C. Recalls 14.1...

Aug 21, 2015

Good Seed Inc. Recalls Soybean...

Aug 11, 2015

NORTHWEST FARM FOOD COOPERATIVE...

Aug 10, 2015

See all recent recalls

FoodSafety.gov

Get this widget



Questions?



Conducting a Risk Factor Study: Benefits to your jurisdiction

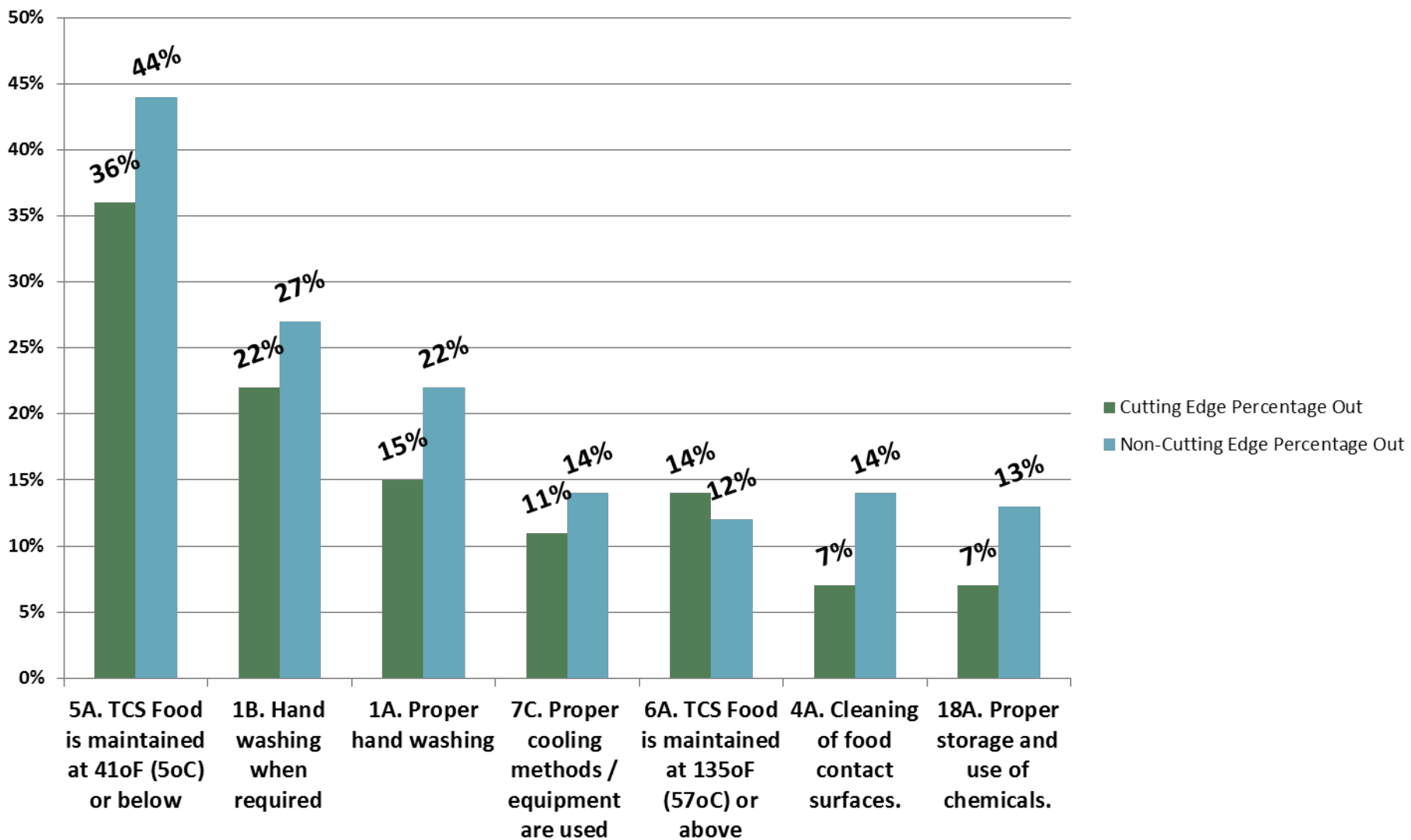


Benefits to a Jurisdictions Food Protection Program

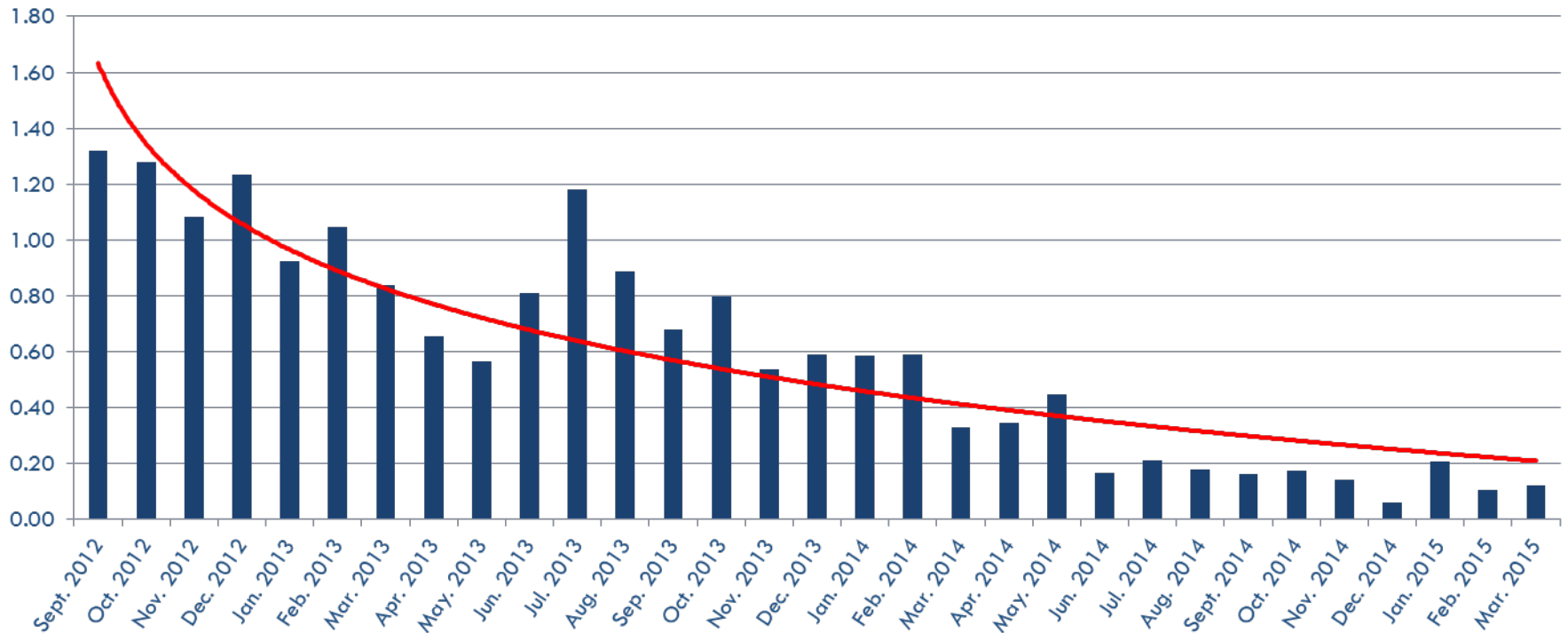
- In 2002 Maricopa County conducted its first self assessment on Program Standards.
 - Major gap at the time was not having a Long Term Intervention or Risk Control Plan Policy in place to address repetitive risk factor violations.
 - Involved training staff on how to assist operators in developing these plans.
- In 2015 Maricopa County was awarded a five year FDA Cooperative Agreement Grant.
- MCESD applied for and was awarded a 5 year FDA Cooperative Agreement grant.
 - Year 1: Risk factor study
 - Year 2: AMC toolbox and training staff on AMC
 - Year 3: Outreach, videos linked to inspection reports
 - Year 4: Revisions/updates
 - Year 5: Risk factor study



Maricopa County 2015-2016 Risk Factor Survey Overview (Cutting Edge Verses Non – Cutting Edge Establishments)

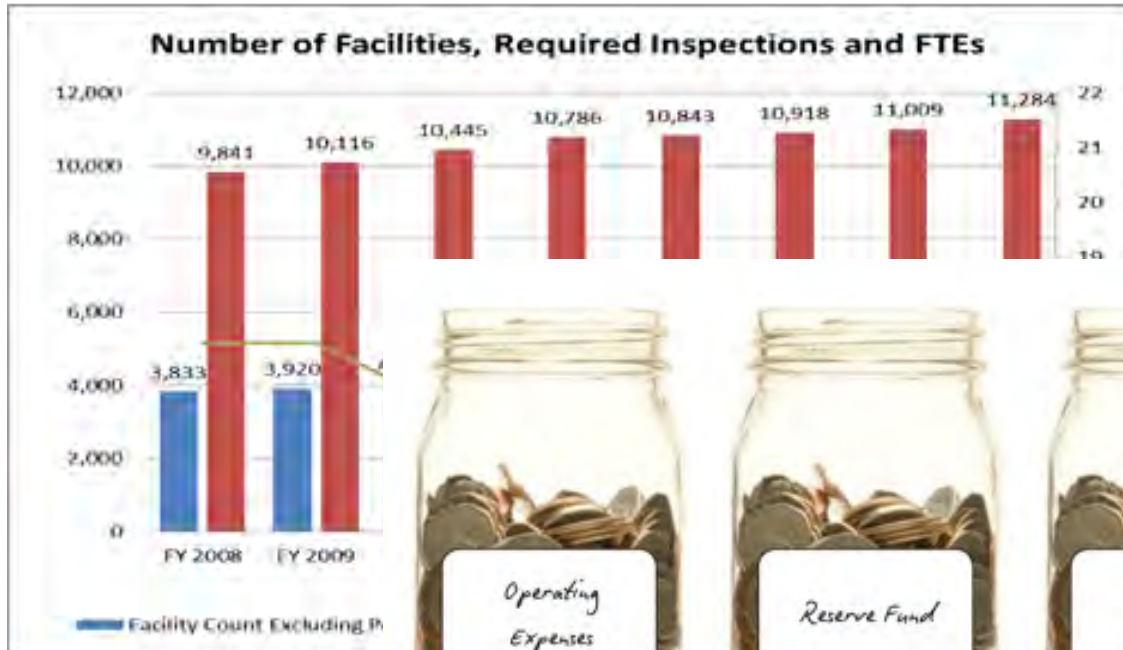


Provides data that supports policy development and change



Employee Health Policy Compliance over time

Mechanisms to justify program



Lasting impact and buy-in



Active Managerial Control - FDA Definition

- **The purposeful incorporation of specific actions or procedures by industry management into the operation of your business to attain control over foodborne illness risk factors.**
- **It embodies a preventative rather than reactive approach to food safety.**
- **Having active managerial control includes having procedures in place for controlling identified foodborne illness risk factors through a continuous system of monitoring and verification.**

Credibility from statistically sound study – comparability over time



TRUST

CREDIBLE

Study changes the dynamic between industry and regulator





Contact Information:



Tim Hurst, MPH, RS, REHS
Environmental Health Supervisor
Maricopa County Environmental Services Department,
Environmental Health Division

thurst@mail.maricopa.gov

(602) 372-3353

Andre C. Pierce, MPA, REHS
Director

Wake County Environmental Services Department,
Environmental Health Division

apierce@wakegov.com

(919) 856-7440



Questions?

